

### IPS e.max All-Ceramic

E.max Veneer (w/Layered Porcelain)	\$
E.max Pressable (w/Layered Porcelain)	\$
E.max Pressable (Stainable)	<b>SINGLE UNIT</b> \$
	<b>(max 3) BRIDGE UNIT</b>
E.max Pressable Inlay/Onlay	\$



### Zirconia

CAD/CAM MILLED ZIRCONIA

BruxZir (Stainable)	\$
Nexx Zrr (Stainable)	\$
Lava Plus (Stainable)	\$
Lava Ultimate (Stainable)	\$
Add Layered Porcelain to Zi Substructure	<b>PER UNIT</b> \$

### PFM



Porcelain/High-Palladium Noble	<b>FLAT-RATE</b> \$
Porcelain/White Gold High-Noble	<b>FLAT-RATE</b> \$

### Full Cast

Full Cast Crown CHOOSE ALLOY OPTION 1-3	<b>LABOR ONLY</b> \$
---	----------------------

- Option 1: 20% Econo-Gold Yellow Noble Alloy
- Option 2: 60% Type III Yellow High-Noble Alloy
- Option 3: 70% White Palladium Noble Alloy

### Implant Restorations

Unprecedented **FLAT-RATE** Implant Restoration Fees

Cement Retained Noble PFM	INCLUDES ALL PARTS *\$
Screw Retained Noble PFM	INCLUDES ALL PARTS *\$
Screw Retained Zirconia (Stainable)	*\$

### High Noble Alloy & Layered Zirconia Available

\*Most Implant Systems



**WEB ONLY VERSION**

**PLEASE CALL  
FOR PRICING!**

### Other Items & Services

All Prices Below Are Per Unit

Connection APPLIES TO ALL SPLINTED & BRIDGE UNITS	\$
Consecutive Single Units	5 OR MORE \$
Crowns Surveyed	\$
Crown Under Partial	W/ PATIENTS PARTIAL \$
	W/ BLUE MOUSSE PICK-UP \$
Diagnostic Wax-Up	PER UNIT \$
Duplicate Model	\$
Epoxy Model	\$
Finger Rest	\$
Guide Plane SURVEYED	\$
Lingual Ledge Rest	\$
Metal Lingual APPLIES TO ANTERIOR CROWN	\$
Metal Occlusal	\$
Occlusal Rest	\$
Occlusal Stop	METAL ISLAND \$
Occluding Crowns	EACH \$
Pink Porcelain AT GINGIVA	\$
Porcelain Butt Margin	\$
Precision Attachment Labor	\$
Reduction Coping METAL	\$
Richmond Crown ATTACHED POST	\$
Separate Post Precious	\$
Shade Consultation & Custom Stain	\$
Soft Tissue GI MASK	\$
Transfer Die APPLIES TO MULTIPLE IMPRESSIONS	\$
Universal Attachment LABOR ADDITIONAL	\$





**Innodent** is a quality-driven lab that has been located in White Lake since 2008. Our goal is to help build and maintain your patient base by consistently providing restorations that **seat with little or no adjustment**. Effortless crown seats allow you to see more patients — in a shorter period of time. Most importantly, those same patients will leave happy and be more likely to recommend you to a friend, relative or neighbor. We combine **first-rate customer service** with simple **flat-rate pricing** and each of our impeccable restorations are fabricated on-site using only quality products from the most respected leaders in the industry. We view each restoration as a functioning piece of art and our ultimate goal is zero adjustment for you and your patient. Given the chance — **we will exceed your expectations.**

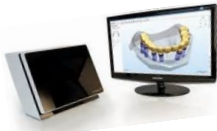
**ivoclar  
vivadent**  
passion vision innovation



**Crystal**  
ZIRCONIA  
for a bright and natural smile

*Noritake*

3shape



  
**Made In  
the U.S.A.**

**Innodent**  
*Done Once. Done Right.*

## 2014 Fee Schedule

**(248) 953-2926**

Proudly Made  
in Michigan

Email: [innodentlaboratories@gmail.com](mailto:innodentlaboratories@gmail.com)

[www.InnodentLabs.com](http://www.InnodentLabs.com)